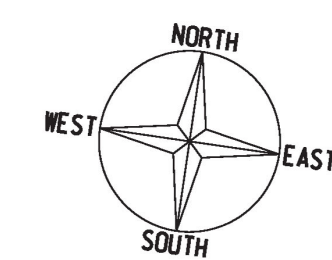
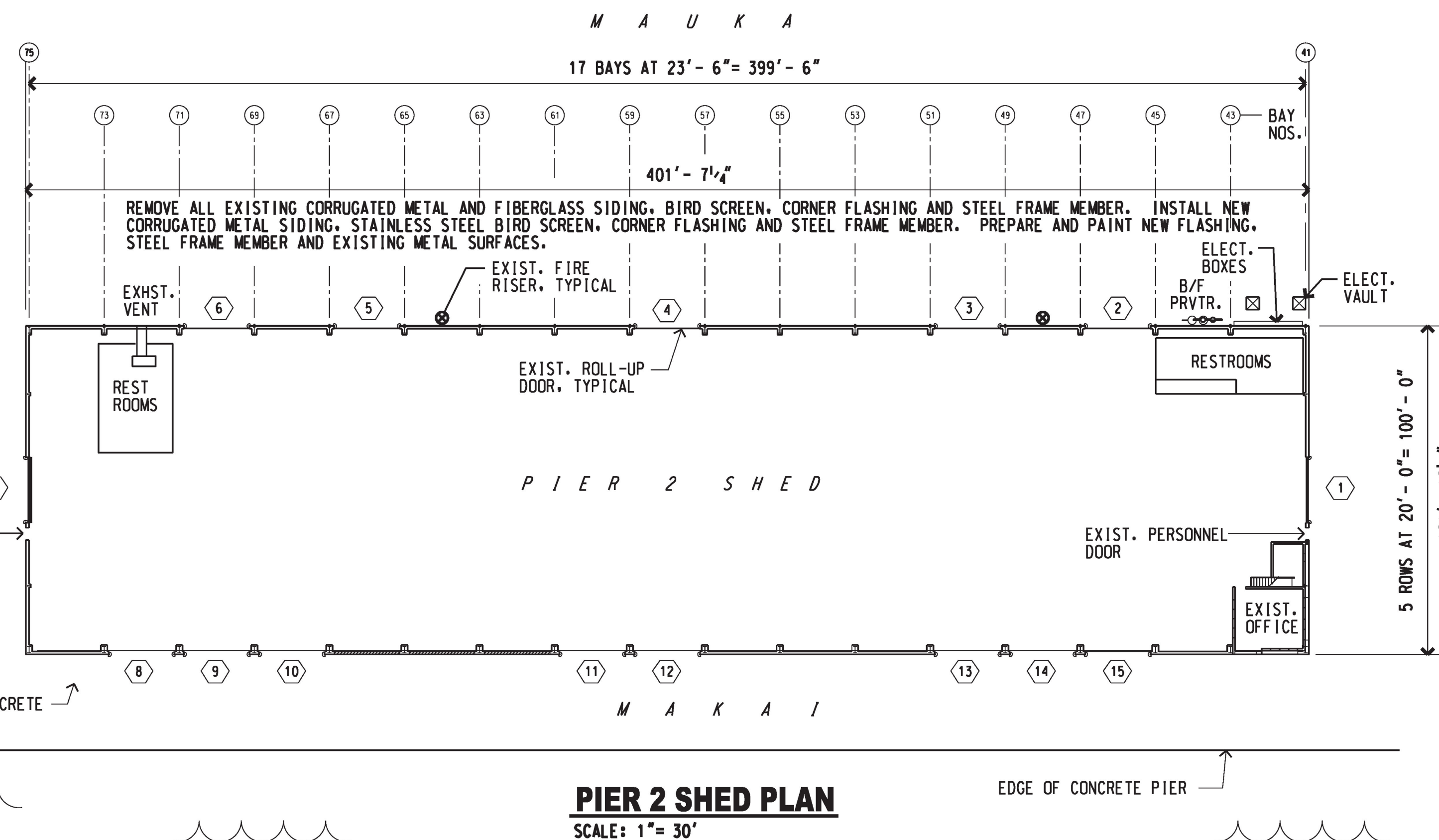


LOCATION MAP - NAWILIWILI HARBOR

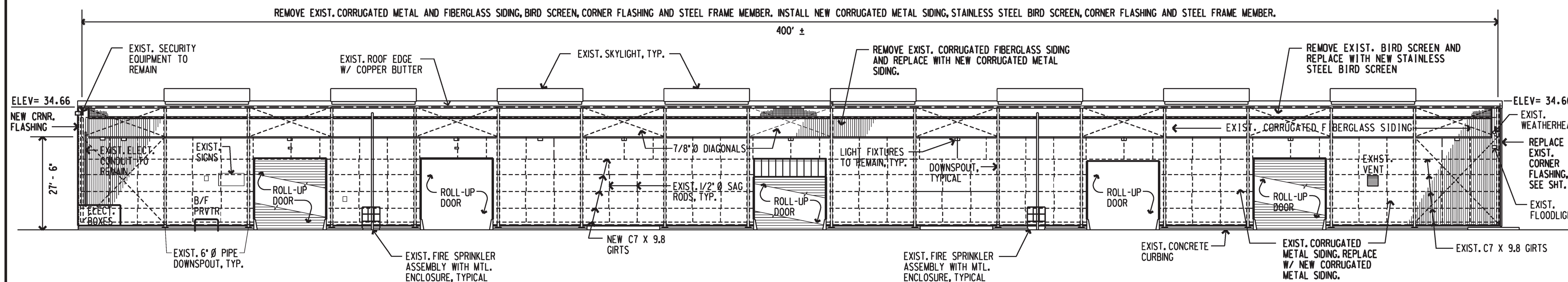


DOOR NOS. → 7
EXIST. PERSONNEL DOOR

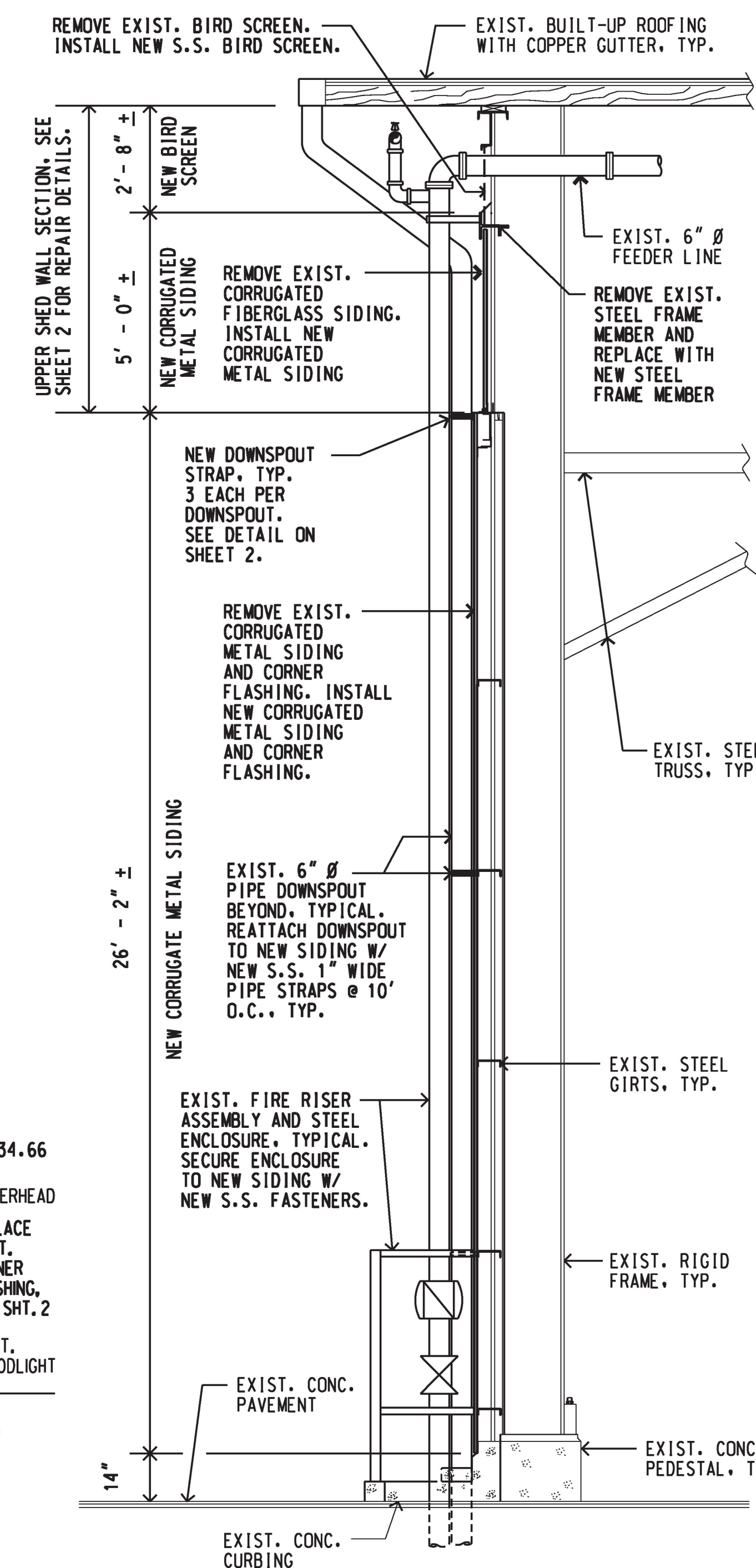
EXIST. CONCRETE PIER APRON



PIER 2 SHED PLAN
SCALE: 1" = 30'

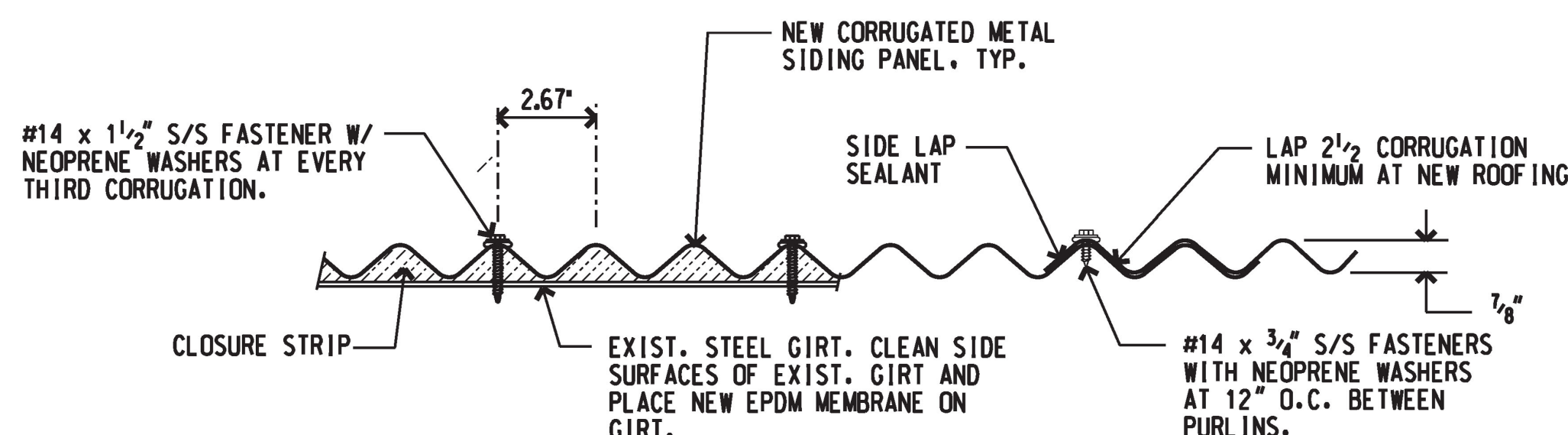


NORTH ELEVATION - PIER 2 SHED (MAUKA)
SCALE: 1/16" = 1' - 0"



TYPICAL SHED WALL SECTION
SCALE: 3/8" = 1' - 0"

NOTE: PLACE NEW EPDM MEMBRANE ON NEW STEEL FRAME MEMBER PRIOR TO INSTALLING NEW SIDNG PANEL.



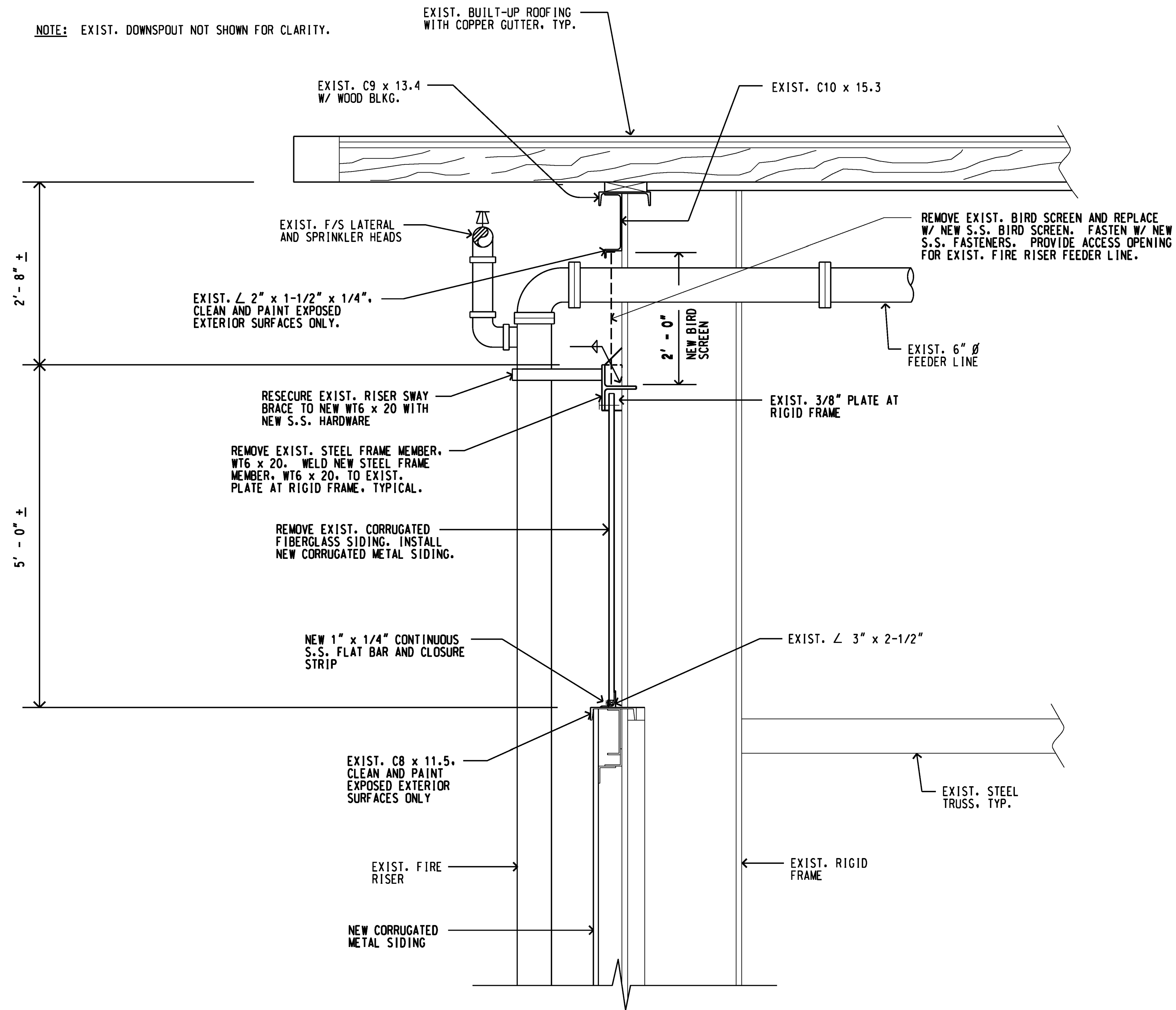
NEW CORRUGATED SIDING DETAIL
SCALE: 3" = 1' - 0"

GENERAL NOTES:

- CONTRACTOR SHALL VERIFY CONDITIONS AND DIMENSIONS IN THE FIELD PRIOR TO ORDERING MATERIALS.
- CONTRACTOR SHALL EXERCISE CAUTION TO PREVENT DAMAGE TO EXISTING STRUCTURES, UTILITIES AND EQUIPMENT IN THE PROJECT AREA.
- ALL WORK SHALL BE COORDINATED WITH THE HARBORS DIVISION KAUAI DISTRICT MANAGER AND THE CONSTRUCTION ENGINEER.
- ALL STRUCTURES AND PORTIONS OF STRUCTURES SHOWN ON THE PLAN ARE EXISTING UNLESS SPECIFICALLY NOTED. EXISTING CONDITIONS ARE BASED ON THE BEST AVAILABLE INFORMATION. NO GUARANTEE IS GIVEN THAT THEY ARE MORE THAN APPROXIMATELY CORRECT.
- THE CONTRACTOR WILL NOT BE ALLOWED TO WORK WHEN A PASSENGER CRUISE VESSEL OR FUEL BARGE ARE BERTHED AT THE PIER 2 SHED FACILITY. THE EXACT SCHEDULING OF THE WORK AND RESTRICTIONS ON THE CONTRACTOR'S ACTIVITIES WILL BE ESTABLISHED AT THE PRE-CONSTRUCTION MEETING.
- THE CONTRACTOR SHALL COMPLY WITH THE CLEAN WATER ACT AND THE STATE HARBORS DIVISION STORMWATER MANAGEMENT PROGRAM. NO POLLUTANT IS ALLOWED TO BE DISCHARGED DIRECTLY OR INDIRECTLY THROUGH THE HARBORS SMALL MS4 OR OTHER POTENTIAL PATHWAYS INTO HARBOR WATERS.
- THE CONTRACTOR SHALL SUBMIT A SITE-SPECIFIC BEST MANAGEMENT PRACTICES (BMPs) PLAN AND HEALTH & SAFETY PLAN TO HARBORS DIVISION CONSTRUCTION ENGINEER PRIOR TO THE START OF ANY CONSTRUCTION WORK.
- IN CASE OF RELEASE OF HAZARDOUS SUBSTANCE, OIL OR ENCOUNTER OF CONTAMINATED SOIL, THE CONTRACTOR SHALL NOTIFY THE APPROPRIATE FACILITY PERSONNEL, EMERGENCY RESPONSE AGENCIES, AND REGULATORY AGENCIES FOLLOWING NOTIFICATION PROCEDURES, AND SHALL NOTIFY THE HARBORS DIVISION CONSTRUCTION ENGINEER IMMEDIATELY (I.E., WITHIN 24 HOURS). CONTACT INFORMATION MUST BE IN LOCATIONS THAT ARE READILY ACCESSIBLE AND AVAILABLE.
- THE CONTRACTOR SHALL NOTE THAT THE EXISTING STEEL FRAME MEMBER IS SUSPECTED OF CONTAINING LEAD PAINT. ALL LEAD PAINT ABATEMENT WORK SHALL BE PERFORMED IN STRICT ACCORDANCE WITH APPLICABLE EPA, OSHA AND DOSH RULES AND REGULATIONS.

REV	DATE	DESCRIPTION	BY	APPROVED
STATE OF HAWAII DEPARTMENT OF TRANSPORTATION HARBORS DIVISION				
JOB TITLE REPLACE SIDING AT PIER 2 SHED NAWILIWILI HARBOR, KAUAI, HAWAII				
SHEET TITLE SHED PLAN, ELEVATION, WALL SECTION, NEW SIDING DETAIL				
SUBMITTED BY: <i>David Johnson</i>		RECOMMENDED BY: <i>[Signature]</i>		
DESIGNED BY: DCA		APPROVED BY: <i>[Signature]</i>		
DRAWN BY: DCA		FOR HARBORS ADMINISTRATOR		
CHECKED BY: AF		JOB NUMBER		
DATE: JULY 2022		S70144R		
SCALE: AS SHOWN		1 OF 2 SHTS.		

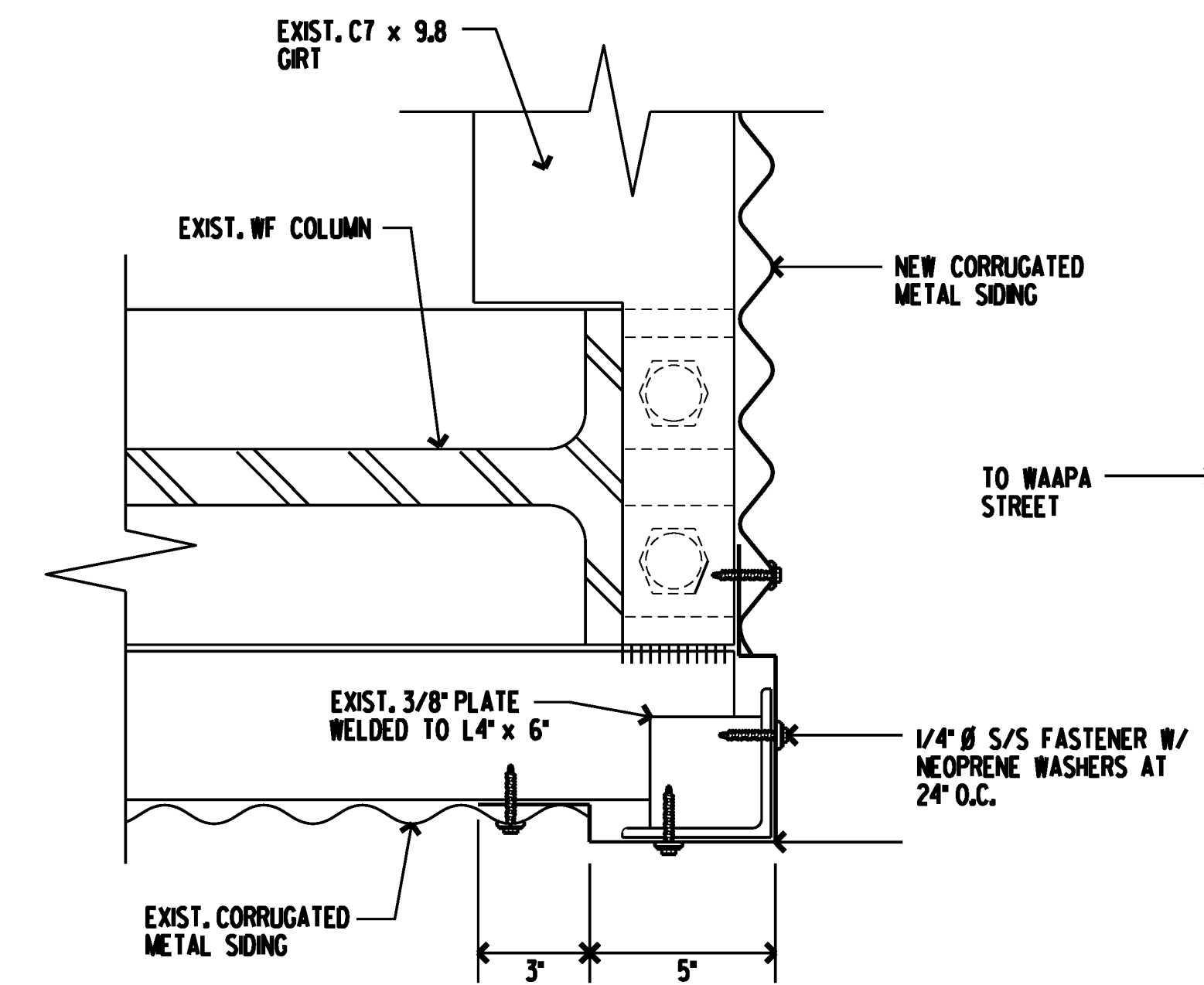
NOTE: EXIST. DOWNSPOUT NOT SHOWN FOR CLARITY.



TYPICAL UPPER SHED WALL SECTION

SCALE: 1" = 1' - 0"

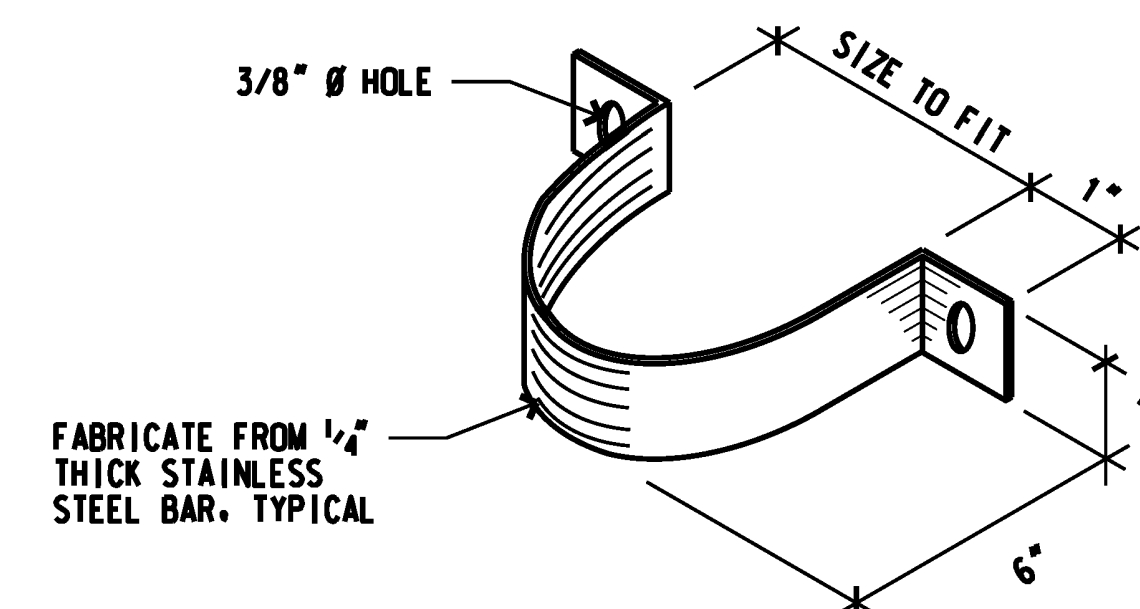
NOTE: OTHER END SIMILAR BUT OPPOSITE.



NEW CORNER FLASHING DETAIL

SCALE: 3" = 1' - 0"

NOTE: FASTEN TO NEW METAL SIDING WITH NEW STAINLESS STEEL 1/4" \emptyset SCREWS. SIZE SCREW LENGTH TO FIT. TYPICAL.



NEW DOWNSPOUT STRAP DETAIL

NOT TO SCALE

REV	DATE	DESCRIPTION	BY	APPROVED
STATE OF HAWAII DEPARTMENT OF TRANSPORTATION HARBORS DIVISION				
JOB TITLE REPLACE SIDING AT PIER 2 SHED HAWILIWILI HARBOR, KAUAI, HAWAII				
SHEET TITLE UPPER WALL SECTION, NEW CORNER FLASHING AND DOWNSPOUT STRAP DETAILS				
SUBMITTED BY: <i>Carol Johnson</i>		RECOMMENDED BY: <i>[Signature]</i>		
DESIGNED BY: DCA		APPROVED BY: <i>[Signature]</i>		
DRAWN BY: DCA		FOR HARBORS ADMINISTRATOR		
CHECKED BY: AF		JOB NUMBER		
DATE: JULY 2022		S70144R		
SCALE: AS SHOWN		2 OF 2 SHTS.		